



To Protect
and Preserve

SEBEC LAKE ASSOCIATION, INC.

P.O. BOX 303

Dover-Foxcroft, Maine 04426-0303

RANDOM THOUGHTS FROM LAKESIDE, YESSSS !!!!!

We launched the old steamer G.E.M. on April 30th after ice out on April 24th. A more beautiful day there never was on Sebec Lake. What a pleasure to launch without winter coats and gloves and the shivers. August 16th will be the tenth anniversary of the return to floating on Sebec.

We're seeking help from perhaps some of the old timers around the lake. We'd like to try to locate the old cylinder head off of the steam engine in the sunken steamer "MARION". This was removed by someone years ago. It is probably cast iron, about 11½ " in diameter, perhaps 1½ " or 2 " thick. There are 5 holes for ½" cap screws. There may, we hope, be some name on the casting. Someone into scuba diving probably removed the head along with many other parts, many years ago. If anyone has any ideas, we'd sure appreciate hearing from you. Thanks.

We're looking forward to Bowerbank Days on August 14th. All sorts of activities, including a boat parade. Information, contact Eunice Preble at 207-564-5160. This event is held on a five year schedule. Look forward to seeing you all there.

McKusick Petroleum Co.

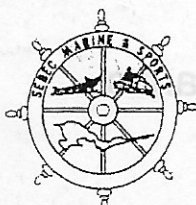
Professional Heating Services

Heating Oil Gasoline
Bulk & Cylinder Gas



32 Summer Street
Dover-Foxcroft

564-3406
1-800-564-3835



SEBEC MARINE & SPORTS

8 Cotton Brook Road
Dover-Foxcroft, ME 04426
(207) 564-2617

Dover Auto Parts, Inc.

27 Summer Street
Dover-Foxcroft
(207) 564-2100 • 564-3353

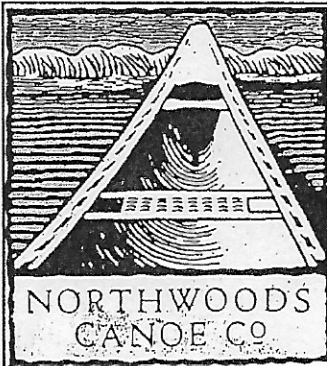


NAPA Auto Parts



Main St, Guilford
876-3594

Howard A. Leland, President



Custom Building Restoration
and Repair of Wood & Canvas
Canoes and Boats

Rollin Thurlow

336 Range Road
Atkinson, Maine 04426

(207) 564-3367 PH

web: www.woodencanoes.com
Info@woodencanoes.com



MOOSEHEAD FURNITURE FACTORY OUTLET STORE

"Maine's Most Unique Shopping Experience!"

97 E. Main Street, Dover-Foxcroft

Mon-Sat 9AM to 5PM • 564-2600

*Factory Seconds-Discontinued Items
Show Samples-Overruns*

Simmons Mattresses-Shard Pottery Outlet
Maine Highlands Guild Arts & Crafts

Sebec Lake Association Director, Gary Soucy, continues to run our website with skill and enthusiasm. Thank Gary.

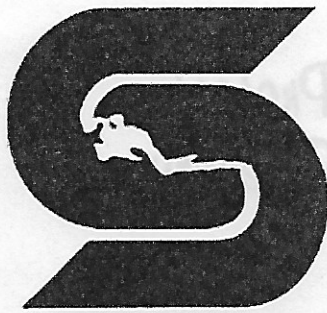
www.sebeclakeassoc.com DO CHECK OUT OUR SITE.

I'll bet everyone has noticed the large amount of new construction around the lake. Some in places no one ever thought would be developed. Everyone it seems wants their piece of the "rock" sure can't blame them for that. Sebec Lake is big enough for us all. I do believe that we should re-dedicate ourselves to, "PRESERVING AND PROTECTING" SEBEC LAKE. Get to know your neighbor, someone let them in on "the secret" of Sebec Lake. Let your neighbor know just how very much the lake means to you and yours.

Bob Hall, (207-564-8318) our esteemed water level and quality overseer informs me that the June readings for water clarity are over 8.3 meters. This is among the BEST in Maine Bob plans on expanding his work to include recording phosphorus levels in Sebec Lake. This will be a continuation of the early work done by The Sebec Lake Association long time stalwart, John Daubenspeck..

On Wednesday, August 11th, the U.S.D.A. Service in Dover-Foxcroft will have a seminar/workshop on "2004 invasive plant patrol".

See Bob Hall if you are interested. Thanks



To Protect
and Preserve

SEBEC LAKE ASSOCIATION, INC.

P.O. BOX 303

Dover-Foxcroft, Maine 04426-0303

ELECTION OF OFFICERS: JULY 24, 2004

PRESIDENT	DAVE RAYMOND
VICE PRESIDENT	GARY SOUCY
TREASURER	LOIS REYNOLDS
CORRESPONDING SEC.	TOM LIZOTTE
RECORDING SEC.	JANET HALL

BOARD OF DIRECTORS:

SHERRY BROWN
ROGER CLUKEY
MAC BLANCHARD

DEAN MEFEE
RUTH MEIRERDIERCK
BECKY ENGDAHL
DON PAGE

ELAINE PAGE
MARY FREDERICKS
"BUD" PROUTY, SR.
GENE SNYDER
MAURICE MARDEN
VIC WOODBREY
JULIE FLANDERS

BOB HALL
RICH HALPIN
ELIZABETH SNYDER
GARY WAKELAND
DONNA HATHAWAY

CHECK OUT OUR WEBSITE: WWW.SEBECLAKEASSOC.COM

WWW.SEBECLAKEASSOC.COM



To Protect
and Preserve

SEBEC LAKE ASSOCIATION, INC.

P.O. BOX 303

Dover-Foxcroft, Maine 04426-0303

ANNUAL MEETING, July 24, 2004

OPENING REMARKS....DAVE RAYMOND

Retirement of Marie Woodbrey, Recording Secretary

MINUTES OF ANNUAL MEETING, 2003....MARIE WOODBREY

TREASURERS REPORT....LOIS REYNOLDS

OLD BUSINESS....BRIEF REPORT ON LAKE LEVEL METER,
GARY SOUCY, COMMENTS ON WATER QUALITY, BOB HALL

WEBSITE INFO....GARY SOUCY

NEW BUSINESS....INDIVIDUAL CONCERNS

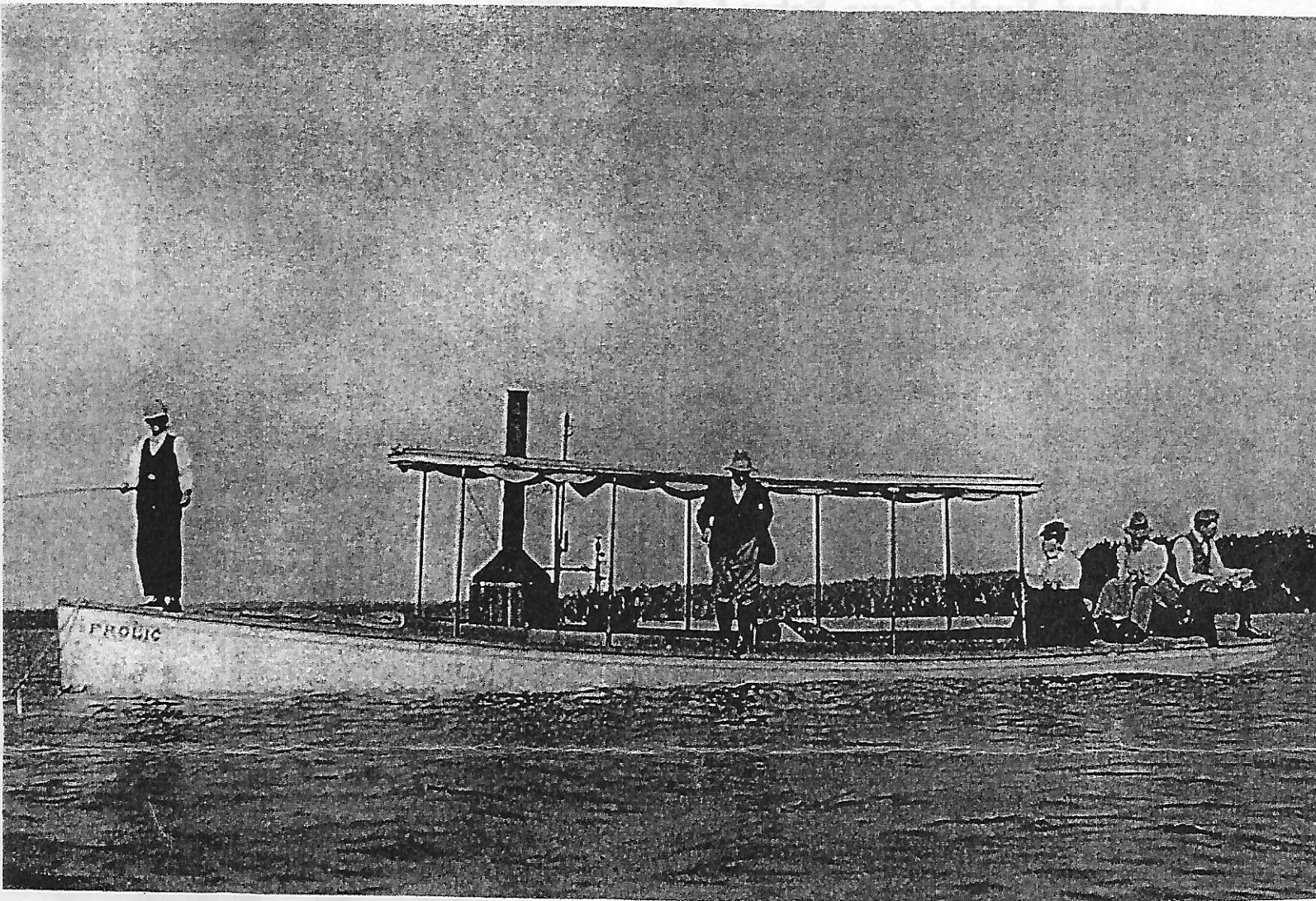
ELECTION OF OFFICERS. NOMINATIONS FROM THE FLOOR
WILL BE ACCEPTED. INTRODUCTION OF OFFICERS.

PLEASE LEAVE ANY COMMENTS OR NOTES ON THIS SHEET
FOR OUR ATTENTION. THANKS

WWW.SEBECLAKEASSOC.COM

Captain Frank Jordon, steamer "FROLIC" ca. 1889

Sebec Lake



Hunting • Skiing • Snowmobiling • Boating • Fishing • Hiking

CAMP RENTALS & MARINE SERVICE

Bear Brook Point

Fire Road 1B Sebec Lake

Housekeeping
Cottages
Boat storage Rentals

Norm & Elsie Watters—Proprietors
RR2, Po Box 485 Bowerbank, ME 04426

Call: (207) 564-3135
Cell: (207) 343-0787
or CALL Dan Watters
at (207) 943-5288

Dover *TrueValue* Hardware

“Helping is just around the corner.”

Owner-Tim Robinson

69 East Main Street Dover-Foxcroft, Maine 04426
Phone (207) 564-2274 Fax: (207) 564-0873

WEBBER ACE HARDWARE

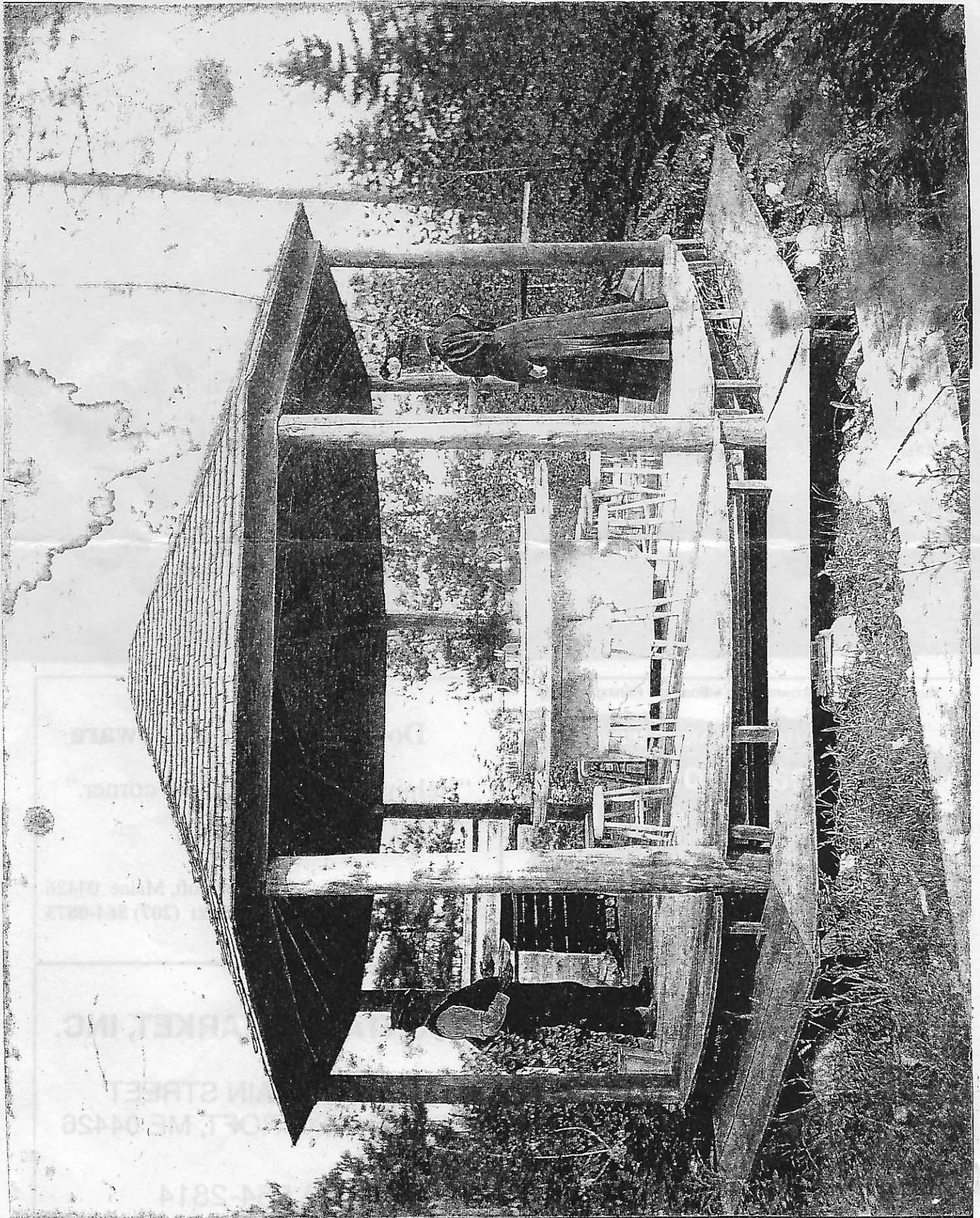
404 ESSEX STREET
DOVER-FOXCROFT, MAINE

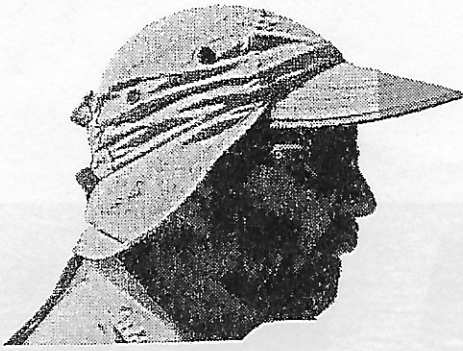
MOUNTAIN'S MARKET, INC.

90 WEST MAIN STREET
DOVER-FOXCROFT, ME 04426

(207) 564-2814

**Captain Frank Jordon, "tenting and picnic area" Jordon
Island, Buck's Cove. Sebec Lake , ca.1890**





Scott Williams *Executive Director*

Lakeside Notes

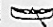
Spring has definitely arrived! The grass is green, trees and shrubs are "leafing out", songbird trills fill the woods, nocturnal spring peeper choruses are deafening, and by now, the ice should be out of even the northernmost lakes and ponds in Maine.

Early Spring Secchi disk readings provide important information about the seasonal conditions in our lakes and ponds. While water clarity readings for some bodies of water may vary only a few tenths of a meter during a typical five-month monitoring cycle, it is not unusual for Secchi disk readings in many lakes to change as much as one or two, and in some cases, even three meters within a single season. Such variation may be perfectly normal, but it makes a strong case for the importance of taking frequent readings throughout the spring, summer and early fall, because when only a few Secchi readings are taken, the end of the year picture may not be representative of conditions in the lake. Two Secchi readings per month, equally spaced, from May through September, will generally provide enough information to accurately characterize conditions in the lake during the most critical period of the year.

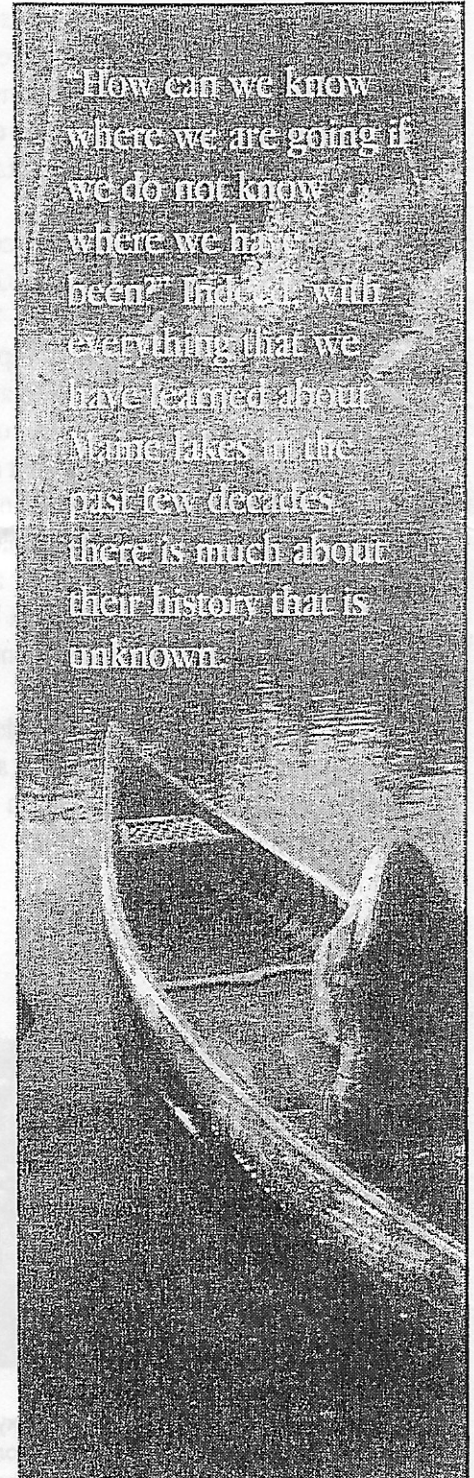
If you are not able to monitor at this frequency, consider sharing the responsibility with a trained alternate — someone who could be available to collect data when it is not convenient for you. Having another trained volunteer on the lake helps to ensure the continuity of data over time.

Speaking of data continuity, it is important! You probably knew that, but it doesn't hurt to reemphasize the value of quality historical data. There are a number of ways to make this case. A recent quote

from Steve Kahl, Director of the Mitchell Center at the University of Maine, and a member of the VLMP Board of Directors, makes the point very clearly. In speaking about the value of historical data in guiding present day and future decisions, Steve said: "How can we know where we are going if we do not know where we have been?" Indeed, with everything that we have learned about Maine lakes in the past few decades, there is much about their history that is unknown. Most of the data for Maine lakes has been collected since the early 1970's, when the VLMP and the DEP were first formed. Prior to that time, with the exception of limited information collected by the Maine Department of Inland Fisheries and Wildlife concerning fisheries management, very little water quality data existed for Maine lakes and ponds.

Every Secchi disk reading is an important one. Of course the same is true of phosphorus and dissolved oxygen samples. The value of an individual reading may not be fully appreciated until long after it is taken — perhaps at the end of the season, and possibly not for years. Never underestimate the value of your efforts as a volunteer lake monitor. Your work may be cited in the future for providing a key link to the understanding and protection of our lakes and ponds! 

"How can we know where we are going if we do not know where we have been?" Indeed, with everything that we have learned about Maine lakes in the past few decades, there is much about their history that is unknown.



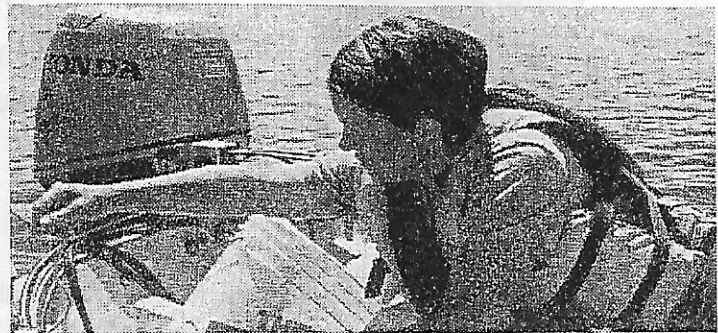
Quality Counts!

Last year, 2003, marked the beginning of a service for volunteers to collect Total Phosphorus sub-surface grab samples and mail them to a laboratory for analysis. That service is available again this year if you or your association is interested. To obtain a 'Total P Kit', contact Tiffany Wilson at the Sawyer Environmental Chemistry Research Lab (207-581-3288). The cost will remain \$24 per sample. Approximately 15 folks took advantage of this service last year; with the exception of confusion regarding the units of measure on the result sheets, the process seemed to go smoothly. This year the lab will report in the same units as the state lab so that the results will not need to be converted before entering them on the data sheet or into the data entry program.

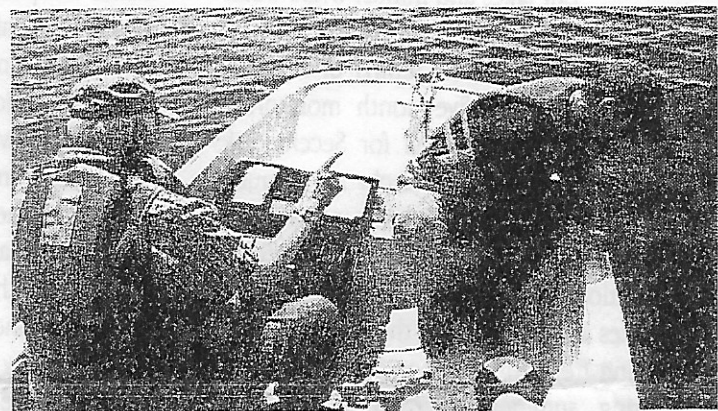
To increase opportunities for volunteers to collect this type of sample, we have added 'Sub-surface Grab Collection' training to the recertification workshop agenda. The training takes about 5 minutes and opens up a number of opportunities for the program. One of these opportunities includes an expansion of the mail-in service with selected parameter tests on 'baseline' samples. DEP will select approximately 30 lakes that are shallow, have monitors trained to collect sub-surface grabs, and have not been visited by DEP staff recently. We will contact volunteers on these lakes and if they are willing, we will arrange for a kit to be mailed to them. The kit is likely to contain 2 bottles, a Total P bottle and a 500 ml plastic bottle that is filled in the same manner as the Total P bottle.

Thanks to all of you that have made it to your recertification workshops thus far. It is great to meet so many folks that love their lakes! Here are a few pictures from the mid-May workshop at Long Pond in Belgrade.

Linda Bacon



Linda Bacon, Maine DEP QA/QC Advisor



Fred Weston, long time Belgrade Monitor, reminding Craig Killingbeck (Long Pond, Belgrade) to jig the probe.



Scott Williams reviews Dissolved Oxygen monitoring procedures with Chuck Lakin (Salmon Lake, Belgrade) and Gilliam Johnston (Messalonskee Lake, Belgrade).

QA/QC Recertification Workshop Schedule

Contact your regional coordinator or the VLMP office to register.

Date	Time	County	Location
May 29	9:00am	Androscoggin	Bear Pond, Turner
May 29	9:00am	Cumberland	Panther Pond, Raymond
June 5	10:00am	Piscataquis	Sebec Lake, Greeley
June 5	1:00pm	Aroostook	Madawaska Lake, T16 R4
June 6	2:00pm	Aroostook	Nickerson Lake, New Limerick
June 6	2:30pm	Knox	Alford Lake
June 12	9:00am	Waldo	Sheepscot Pond, Palermo
June 13	9:00am	Penobscot	Pushaw Lake, Old Town

Additional Recertification Workshops
By appointment only. Call 783-7733 to register.

June 12	Brackett Environmental Center, Auburn
July 7	Brackett Environmental Center, Auburn

How Full is Full?

This fall has been the fall of very windy and very wet weather. In mid-October we had a bout of four days in a row with wind gusts over 50 mph. We were without power for 73 hours, and we had to clear eleven blown down or damaged trees from the fire road. This was repeated two weeks later with 40-50 mph wind gusts for four days in a row.

Usually, about October 15th the lake gets lowered to around 24-30 inches below the summer norm...and it stays around there 'till the March rains & snowpack meltdown. (except for a brief January thaw sometimes). We seemed to get an inch-and-a-half rain storm every 8 days, or so, and December landed two snowstorms totaling around 40" of the white stuff...most of which melted in ensuing rains. The saturated ground couldn't hold more water, and the run-off was fierce.

The lake, at one storm in November, rose to about 38" above summer normal which meant my wharf was afloat and my cellar threatened. Remember, it's supposed to be 24" below summer normal at this time of year, so that's a five foot difference! As a matter of fact I used every piece of rope I could find to tie down all the neighbors stuff so it wouldn't float off. It took a week for the water to recede to where it was safe to collect all my lines back. Then, in early December...it flooded again, and out came the ropes...except this time, I had to trudge through almost 30" of snow to get to the fun of tying things down again.

If you want to visualize just how high the water was; at the time of year when it should be difficult to take an eight-foot pram through the channel which leads into Greeley's Landing, without going aground...a local mariner was seen navigating his twenty-foot pontoon boat over the wooden breakwater which guards the Landing entrance. The native skipper was heard to say, "I've been waiting to do that all my life!"

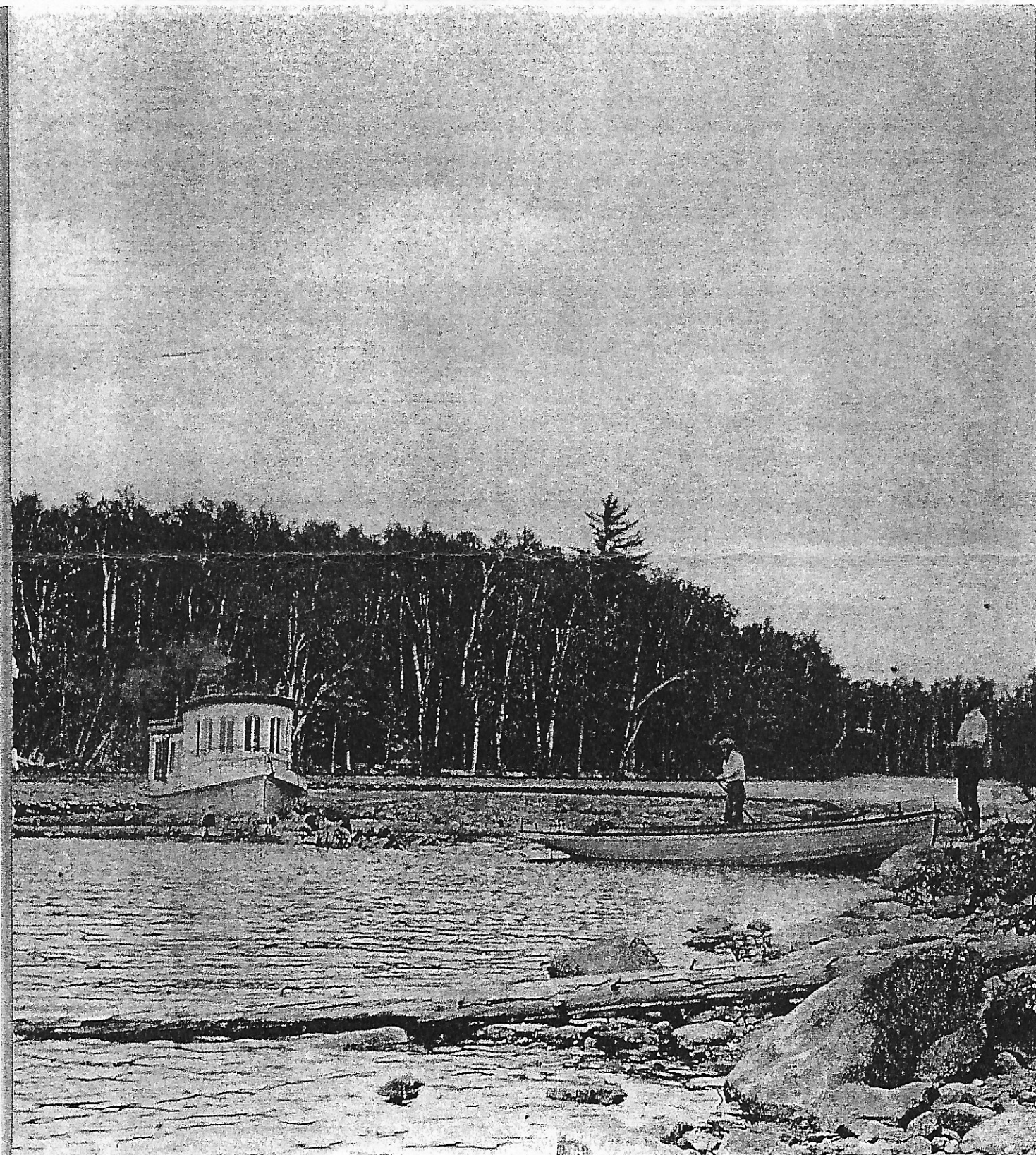
In late December, all the gates at the Dam were finally open, and the severe rains diminished, and things even started to melt a bit. On New Year's Eve afternoon icebergs (automobile sized chunks) flowed towards the Dam and backed up a bit before they took out the splash boards. Now the lake is really dropping, I think our flooding problems are slim for a while.

I try to remember that there are 375 square miles of watershed into the lake (one of the largest watershed areas for any lake in the State), and, for the most part, the only way for the excess water to exit is down the Sebec River. But at least two times this fall the water in the lake was just too darned high. It is said that some use statistics as a drunk uses a lamp post...more for support than illumination. So, I'll leave the lake level meters, snow and rainfall accumulations, and whether the gates are up or down for others to bandy about. All I know is that if you leave the Sebec Lake water level too high in the early fall, there's just no place for excess water to go but into your front yard...or worse for some, inside of their camp. One can't even hope for flood insurance, as the lake is not part of FEMA's flood zones. It is for sure that every winter we will have to cope with heavy rains, melting of snow, ice jammed streams & brooks, and either frozen ground or saturated land which can't hold the water. So we gotta learn to manage the lake as best we can.

David T. Lockwood
Seymour Cove, Bowerbank

Captain Harry Coy, steamer "Marion" Sebec Village,
"Booming"logs ca.1910

This fall has been the fall of very windy and very wet weather. In mid-October we had a bout of four days in a row with wind gusts over 50 mph. We were without power for 73 hours and we



Sebec Cove, Bowdoin



To Protect
and Preserve

SEBEC LAKE ASSOCIATION, INC.

P.O. BOX 303

Dover-Foxcroft, Maine 04426-0303

MEMBERSHIP APPLICATION / DUES PAYMENT

DUES ARE DUE ON JULY FIRST OF EACH YEAR. PLEASE COMPLETE THE FOLLOWING FORM TO THE BEST OF YOUR KNOWLEDGE. WE ARE ATTEMPTING TO UPGRADE OUR MAILING LIST TO BETTER SERVE OUR MEMBERS AND LAKE PROPERTY OWNERS. THANKS.

NAME: _____

MAILING ADDRESS _____

PROPERTY ADDRESS, MAP & LOT NUMBER FROM YOUR TAX BILL IF POSSIBLE

NEW MEMBER, OR RENEWAL (please circle)

E-MAIL ADDRESS if on-line _____

DUES ARE CURRENTLY \$ 15.00 YEARLY

MAIL CHECKS FOR DUES TO
SEBEC LAKE ASSOCIATION TREASURER,
P.O. BOX 303 • DOVER-FOXCROFT, MAINE 04426

ANY QUESTIONS OR PERCEIVED PROBLEMS REGARDING
SEBEC LAKE ASSOCIATION, PLEASE CONTACT

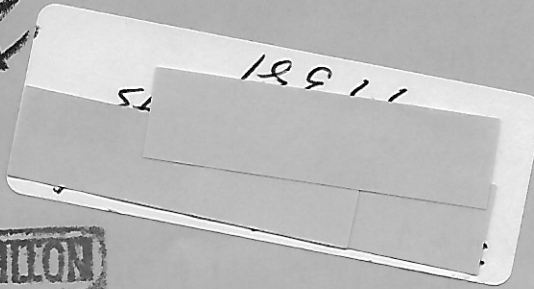
DAVE RAYMOND, P.O. BOX 96 • SEBEC VILLAGE, MAINE 04481
TELEPHONE, 564-7460 AFTER 7 A.M. AND BEFORE 11:00 P.M. THANKS.

WINTERS, DAVE RAYMOND, 12 OLD REDDING RD • W. REDDING, CT. 06896
(203)-438-6865

Annual meeting, July 24, 2004... Y.M.C.A., Park St. Dover-Foxcroft
7:00 P.M.

#1203

NOTIFIED



ADDRESS SERVICE REQUESTED

04426

Dover Foxcroft, Maine

P.O. Box 303

THE SEBEC LAKE ASSOCIATION



TIM MERRILL & CO
SEBEC LAKE MAINE